

GRTS Conduit Outlet Boxes for Stanchion Mounting Lighting

Explosionproof, Dust-Ignitionproof

UNILETS™ for use with Threaded Metal Conduit. Furnished with Internal Ground Screw and O-ring.

NEC/CEC: Class I, Division 1 and 2, Groups B ♦, C, D | Class II, Division 1 and 2, Groups E, F, G | Class III | Class 1, Zone 1 and 2, IIA, IIB, IIB + H2 ♦ | NEMA 3, 4, 4X ① | IP66 (without drain)

Applications

- Ideally suited for stanchion mounted lighting.
- Can be used with conduit or cable infrastructures.

Features

- T-configurations with large center 1-1/2" hub for direct stanchion pole mounting.
- Side hub entry options: 1-1/2" to cover most needs or 3/4" for most common conduit attachment.
- Unique mounting feet to provide extra support or when used with cable.
- Captive cover with aviation cable eliminates drop hazard.
- Standard O-rings provide raintight fit. NEMA 3, 4.
- Ambient temperature range:
 - Without drain -40 °C to +60 °C (-40 °F to +170 °F).
 - With drain -25 °C to +40 °C (-13 °F to 104 °F).

Standard Materials

- Body: ductile iron or copperfree (4/10 of 1% max.) aluminum
- Cover: copperfree (4/10 of 1% max.) aluminum

Standard Finishes

- Ductile iron bodies: triple coat — (1) zinc electroplate, (2) chromate, and (3) epoxy powder coat
- Aluminum bodies and covers: epoxy powder coat



GRTS150



GRTS15075

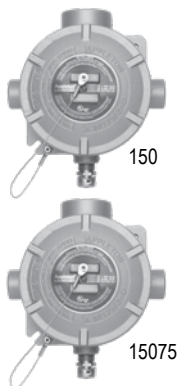
Options

- Drain, see *Catalog Numbering Guide* for suffixes
- DIN Rail mounted terminal blocks, see *Catalog Numbering Guide* for suffixes

NEC/CEC Certifications and Compliances

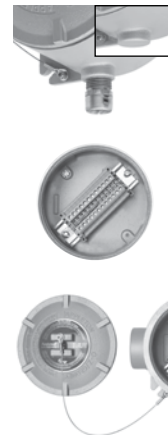
- UL Standard: UL 1203
- CSA Standard: C22.2 No. 25, C22.2 No. 30
- cULus Listed: E85310

Illustrated Features



Unique hub designs provide most common center hub 1-1/2" stanchion mount attachment with side hub variations for either: ultimate incoming trade size flexibility using adapters or most common 3/4" need, eliminating the need for adapters.

Unique mounting feet design for cable-fed infrastructures enables easier, more convenient assembly to Unistrut® or other surface mount locations.



Drain option mount eliminates costly fourth hub and reducers. Factory installed drain when specified. Mount location undrilled if no drain specified.

DIN rail mounted terminal blocks ② with 10 AWG capacity up to 12 pos., provide flexibility for most power, termination and splice needs. Covers lighting, and extras such as photocells, or continuing wire runs

Cabled cover prevents drop hazard when removing cover for maintenance.

Catalog Numbering Guide — GRTS Options

(Example Item: GRTS15075ADT12)

<p>GRTS</p> <p>Series Prefix: GRTS - T Style Stanchion Mount</p>	<p>15075</p> <p>Hub Configuration: 150 - 1-1/2" (Left, Center, Right) 15075 - 3/4" (Left), 1-1/2" (Center), 3/4" (Right)</p>	<p>A</p> <p>Material: Blank - Iron A - Aluminum</p>	<p>D</p> <p>Drain: Blank - No drain D - Drain</p>	<p>A</p> <p>Terminal Block: Blank - No terminal block T6 - 6 Position T12 - 12 Position</p>
---	---	--	--	--

♦ In Class I, Division 1, Group B atmospheres, all conduit runs must have a sealing fitting (not supplied) field-installed adjacent to the enclosure.

① Aluminum body and cover only.

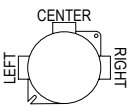
② Terminal block is UL listed and CSA certified for 600 Volt, 30 Amp.

GRTS Conduit Outlet Boxes for Stanchion Mounting Lighting

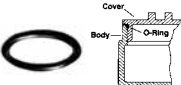


Explosionproof, Dust-Ignitionproof

UNILETS™ for use with Threaded Metal Conduit. Furnished with Internal Ground Screw and O-ring.

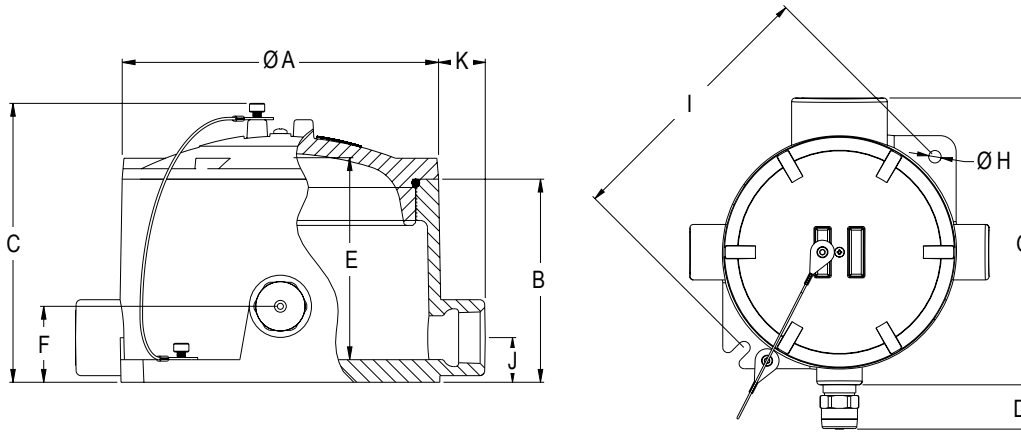
NEC/CEC: Class I, Division 1 and 2, Groups B ♦, C, D | Class II, Division 1 and 2, Groups E, F, G | Class III | Class 1, Zone 1 and 2, IIA, IIB, IIB + H2 ♦ | NEMA 3, 4, 4X ① | IP66 (without drain)

	LEFT Hub Size in Inches	CENTER Hub Size in Inches	RIGHT Hub Size in Inches	Cover Opening in mm (in)	Volume Capacity in dm ³ (in ³)	Weight in kg (lbs)	Catalog Number Ductile Iron Body with Aluminum Cover	Weight in kg (lbs)	Catalog Number Aluminum Body with Aluminum Cover
	1-1/2	1-1/2	1-1/2	123.95 (4.88)	1.18 (72.0)	4.51 (9.94)	GRTS150	2.24 (4.94)	GRTS150-A
	3/4	1-1/2	3/4	123.95 (4.88)	1.18 (72.0)	4.34 (9.56)	GRTS15075	2.12 (4.68)	GRTS15075-A

Replacement Parts

	Weight in kg (lbs)	Catalog Number
 <p>O-ring—Buna-N Provides raintight fit</p>	0.045 (0.1)	GRG-3
 <p>Drain 1/2" trade size</p>	0.079 (0.18)	ECD50B4X
 <p>Terminal Block—DIN Rail Mounted ② For use in GRTS boxes. Wire range of #26-#10 AWG. Mounts on two pre-drilled/tapped holes.</p> <ul style="list-style-type: none"> • 6 Position • 12 Position 	0.09 (0.21) 0.20 (0.45)	TBDIN06 TBDIN12

Dimensions in Millimeters (Inches)



Catalog Number	A	B	C	D	E	F	G	H	I	J		K	
										1-1/2"	3/4"	1-1/2"	3/4"
GRTS150 / GRTS150-A	146.1 (5.75)	93.7 (3.69)	128.7 (5.07)	28.0 (1.10)	93.2 (3.67)	35.1 (1.38)	181.5 (7.14)	7.9 (0.31)	170.6 (6.72)	35.1 (1.38)	—	24.2 (0.95)	—
GRTS15075 / GRTS15075-A	146.1 (5.75)	93.7 (3.69)	128.7 (5.07)	28.0 (1.10)	93.2 (3.67)	35.1 (1.38)	181.5 (7.14)	7.9 (0.31)	170.6 (6.72)	35.1 (1.38)	20.6 (0.81)	24.2 (0.95)	21.6 (0.85)

♦ In Class I, Division 1, Group B atmospheres, all conduit runs must have a sealing fitting (not supplied) field-installed adjacent to the enclosure.

① Aluminum body and cover only.

② Terminal block is UL listed and CSA certified for 600 Volt, 30 Amp.