

Aluminum Conduit Bodies, Covers and Gaskets

For Rigid Conduit & IMC.

NEC/CEC — Suitable for use in the following
Hazardous Locations:
Class I, Division 2 per NEC 501.10(B)(4)

Applications

- To provide access to conductors for pulling, splicing, maintenance and future changes/upgrades.
- Allows connection of straight conduit runs, branch conduit runs and 90° bends.

Features

- Tapered threaded hubs (NPT).
- Internal volume and maximum wire clearly marked on castings.

Standard Materials

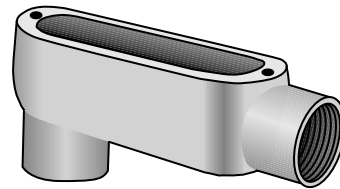
- Bodies: copperfree (max. 4/10 of 1%) aluminum
 - 1/2" thru 2": pressure cast
 - 2-1/2" thru 4": sand cast
- Blank covers: malleable iron, steel or copperfree (max. 4/10 of 1%) aluminum
- Cover screws: stainless steel
- Gaskets: neoprene or composition fiber

Standard Finishes

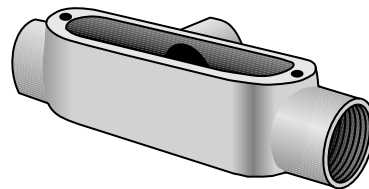
- Aluminum bodies: epoxy powder coat
- Stamped aluminum covers: natural finish
- Cast aluminum covers: epoxy powder coat

NEC/CEC Certifications and Compliances

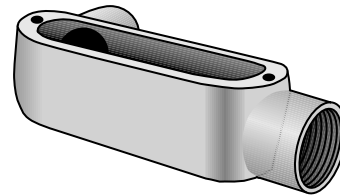
- UL Standards: 514A
- UL Listed: E-18095w
- CSA Standard: C22.2 No. 18
- CSA Certified: 009795
- NEMA Standard: FB-1, FB-2.10



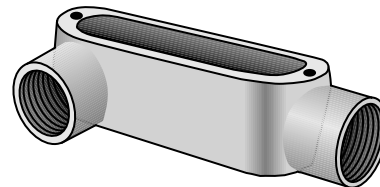
Type LB-A



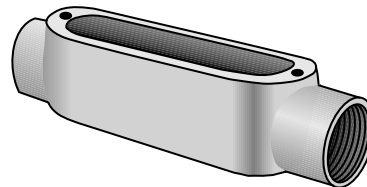
Type T-A



Type LL-A



Type LR-A

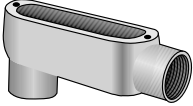
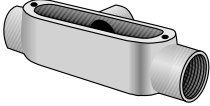


Type C-A

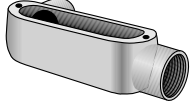
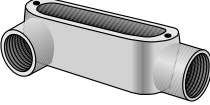
Aluminum Conduit Bodies, Covers and Gaskets

For Rigid Conduit & IMC.

NEC/CEC — Suitable for use in the following
Hazardous Locations:
Class I, Division 2 per NEC 501.10(B)(4)

Aluminum Conduit Bodies				
Hub Size (Inches)	Max. Wire Fill	LB-A	Max. Wire Fill	T-A
				

Diecast				
1/2	①	LB-50A	①	T-50A
3/4	(3) # 6	LB-75A	(3) # 6	T-75A
1	(3) # 4	LB-100A	(3) # 4	T-100A
1-1/4	(3) # 2	LB-125A	(3) # 2	T-125A
1-1/2	(3) # 1/0	LB-150A	(3) # 1	T-150A
2	(3) # 4/0	LB-200A	(3) # 2/0	T-200A
Sandcast				
2-1/2	(3) 300	LB-250A	(3) 300	T-250A
3	(3) 400	LB-300A	(3) 300	T-300A
3-1/2	(3) 500	LB-350A	(3) 350	T-350A
4	(3) 500	LB-400A	(3) 350	T-400A

Hub Size (Inches)	Max. Wire Fill	LL-A	Max. Wire Fill	LR-A
				

Diecast				
1/2	①	LL-50A	①	LR-50A
3/4	(3) # 6	LL-75A	(3) # 6	LR-75A
1	(3) # 4	LL-100A	(3) # 4	LR-100A
1-1/4	(3) # 2	LL-125A	(3) # 2	LR-125A
1-1/2	(3) # 1	LL-150A	(3) # 1	LR-150A
2	(3) # 2/0	LL-200A	(3) # 2/0	LR-200A
Sandcast				
2-1/2	(3) 300	LL-250A	(3) 300	LR-250A
3	(3) 350	LL-300A	(3) 350	LR-300A
3-1/2	(3) 350	LL-350A	(3) 350	LR-350A
4	(3) 350	LL-400A	(3) 350	LR-400A

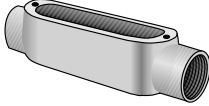
① All 1/2" Max Wire Fill Calculations per the NEC - Annex C - Table C8.

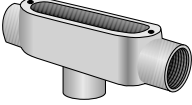
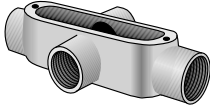
Aluminum Conduit Bodies, Covers and Gaskets

For Rigid Conduit & IMC.

NEC/CEC — Suitable for use in the following
Hazardous Locations:
Class I, Division 2 per NEC 501.10(B)(4)

Aluminum Conduit Bodies

Hub Size (Inches)	Max. Wire Fill	Diecast		Sandcast	
			C-A		
					
1/2	①	C-50A			—
3/4	(3) # 6	C-75A			—
1	(3) # 4	C-100A			—
1-1/4	(3) # 2	C-125A			—
1-1/2	(3) # 1/0	C-150A			—
2	(3) # 3/0	C-200A			—
2-1/2	(3) 300	—			C-250A
3	(3) 300	—			C-300A
3-1/2	(3) 350	—			C-350A
4	(3) 350	—			C-400A

Hub Size (Inches)	Max. Wire Fill	Sandcast			
		TB-A	Max. Wire Fill	X-A	
					
1/2	①	TB-50A	①	X-50A	
3/4	(3) # 6	TB-75A	(3) # 6	X-75A	
1	(3) # 6	TB-100A	(3) # 4	X-100A	
1-1/4	(3) # 6	TB-125A	—	X-125A	
1-1/2	(3) # 4	TB-150A	—	X-150A	
2	(3) # 1/0	TB-200A	—	X-200A	
2-1/2	—	—	—	—	
3	—	—	—	—	
3-1/2	—	—	—	—	
4	—	—	—	—	

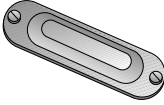
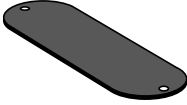
① All 1/2" Max Wire Fill Calculations per the NEC - Annex C - Table C8.

Aluminum Conduit Bodies, Covers and Gaskets

For Rigid Conduit & IMC.

NEC/CEC — Suitable for use in the following
Hazardous Locations:
Class I, Division 2 per NEC 501.10(B)(4)

Blank Covers and Gaskets ①

Body Size (Inches)	Domed Top Design Cover	Solid Cover Sealing Gasket	
		Velbuna	Neoprene
			
1/2	BS-50A	SG-50	SGN-50
3/4	BS-75A	SG-75	SGN-75
1	BS-100A	SG-100	SGN-100
1-1/4 - 1-1/2	BS-125A	SG-125	SGN-125
2	BS-200A	SG-200	SGN-200
2-1/2 - 3	BS-250A	SG-250	SGN-250
3-1/2 - 4	BS-350A ①	SG-350	SGN-350

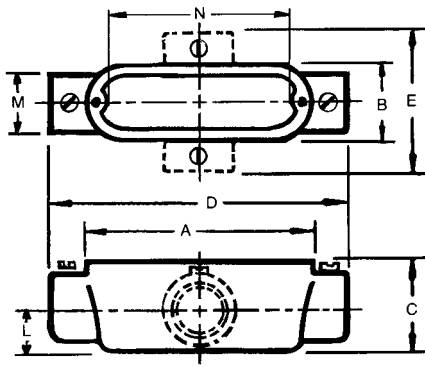
① Flat Top Design Cover

Aluminum Conduit Bodies, Covers and Gaskets

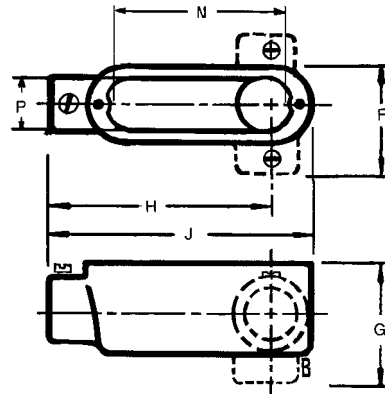
For Rigid Conduit & IMC.

NEC/CEC — Suitable for use in the following
Hazardous Locations:
Class I, Division 2 per NEC 501.10(B)(4)

Dimensions in Millimeters (Inches)



Types C, T, TB, X



Types LB, LL, LR

Hub Size (Inches)	Dimensions In Millimeters (Inches)													
	A	B	C	D	E	F	G	H	J	L	M	N	P	
Pressure Cast														
1/2	100.1 (3.94)	33.3 (1.31)	35.1 (1.38)	120.7 (4.75)	65.0 (2.56)	50.8 (2.00)	52.3 (2.06)	88.9 (3.50)	109.5 (4.31)	16.0 (0.63)	28.7 (1.13)	79.8 (3.14)	26.7 (1.05)	
3/4	117.6 (4.63)	39.6 (1.56)	41.4 (1.63)	143.0 (5.63)	76.2 (3.00)	57.2 (2.25)	62.0 (2.44)	104.9 (4.13)	130.3 (5.13)	19.1 (0.75)	35.1 (1.38)	96.0 (3.78)	32.3 (1.27)	
1	136.7 (5.38)	46.0 (1.81)	47.8 (1.88)	169.9 (6.69)	88.9 (3.50)	66.8 (2.63)	71.4 (2.81)	124.0 (4.88)	152.4 (6.00)	23.9 (0.94)	42.9 (1.69)	114.3 (4.50)	38.6 (1.52)	
1-1/4	182.6 (7.19)	63.5 (2.50)	69.9 (2.75)	217.4 (8.56)	—	88.9 (3.50)	98.6 (3.88)	166.6 (6.56)	200.2 (7.88)	26.9 (1.06)	54.1 (2.13)	152.4 (6.00)	57.2 (2.25)	
1-1/2	182.6 (7.19)	63.5 (2.50)	69.9 (2.75)	217.4 (8.56)	—	88.9 (3.50)	96.8 (3.81)	163.6 (6.44)	200.2 (7.88)	30.2 (1.19)	60.5 (2.38)	152.4 (6.00)	57.2 (2.25)	
2	241.3 (9.50)	79.5 (3.13)	87.4 (3.44)	274.6 (10.81)	—	106.4 (4.19)	115.8 (4.56)	211.1 (8.31)	258.8 (10.19)	38.1 (1.50)	74.7 (2.94)	204.7 (8.06)	69.9 (2.75)	
Sand Cast														
2-1/2	311.2 (12.25)	109.5 (4.31)	98.6 (3.88)	384.3 (15.13)	—	146.1 (5.75)	133.4 (5.25)	301.8 (11.88)	347.7 (13.69)	46.0 (1.81)	85.9 (3.38)	270.0 (10.63)	93.7 (3.69)	
3	311.2 (12.25)	109.5 (4.31)	117.6 (4.63)	384.3 (15.13)	—	146.1 (5.75)	152.4 (6.00)	293.6 (11.56)	347.7 (13.69)	55.6 (2.19)	104.9 (4.13)	270.0 (10.63)	93.7 (3.69)	
3-1/2	378.0 (14.88)	139.7 (5.50)	131.8 (5.19)	460.5 (18.13)	—	181.1 (7.13)	173.0 (6.81)	355.6 (14.00)	419.1 (16.50)	63.5 (2.50)	120.7 (4.75)	333.5 (13.13)	124.0 (4.88)	
4	378.0 (14.88)	139.7 (5.50)	141.2 (5.56)	460.5 (18.13)	—	181.1 (7.13)	182.6 (7.19)	349.3 (13.75)	419.1 (16.50)	69.9 (2.75)	130.3 (5.13)	333.5 (13.13)	124.0 (4.88)	

Aluminum Conduit Bodies, Covers and Gaskets

For Rigid Conduit & IMC.

NEC/CEC — Suitable for use in the following
Hazardous Locations:
Class I, Division 2 per NEC 501.10(B)(4)

Applications

- To provide access to conductors for pulling, splicing, maintenance and future changes/ upgrades.
- Allows connection of straight conduit runs, branch conduit runs and 90° bends.

Features

- Tapered threaded hubs (NPT).
- Packaged complete with cover and gasket under one Catalog Number.
- Ready to use.

Standard Materials

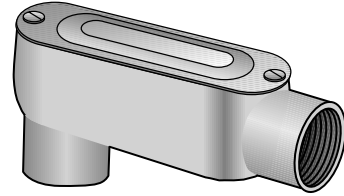
- Conduit Body: copperfree (max. 4/10 of 1%) aluminum
- Cover: **Type BS** copperfree (max. 4/10 of 1%) aluminum
- Gasket: **Type SGN** Neoprene

Standard Finishes

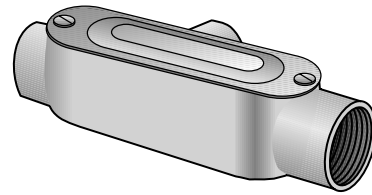
- Conduit Body - epoxy powder coat enamel

NEC/CEC Certifications and Compliances

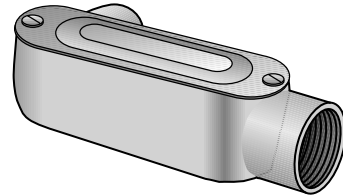
- UL Standards: 514A
- UL Listed: E-18095
- CSA Standard: C22.2 No. 18
- CSA Certified: LR-9795
- NEMA Standard: FB-1, FB-2.10



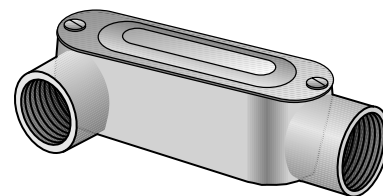
Type LB-ACG



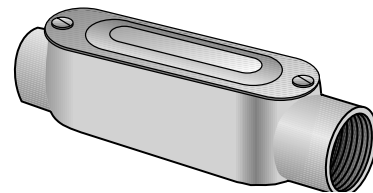
Type T-ACG



Type LL-ACG



Type LR-ACG



Type C-ACG

OZ/GEDNEY™

COMMERCIAL AND INDUSTRIAL FITTINGS: CONDUIT BODIES

Aluminum Conduit Bodies, Covers and Gaskets

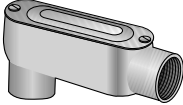
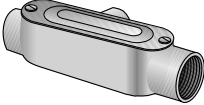
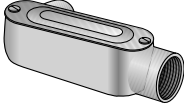
For Rigid Conduit & IMC.



NEC/CEC — Suitable for use in the following

Hazardous Locations:

Class I, Division 2 per NEC 501.10(B)(4)

Aluminum Conduit Bodies

Hub Size (Inches)	Max. Wire Fill	LB-ACG	Max. Wire Fill	T-ACG	Max. Wire Fill	LL-ACG
						
1/2	①	LB-50ACG	①	T-50ACG	①	LL-50ACG
3/4	(3) # 6	LB-75ACG	(3) # 6	T-75ACG	(3) # 6	LL-75ACG
1	(3) # 4	LB-100ACG	(3) # 4	T-100ACG	(3) # 4	LL-100ACG
1-1/4	(3) # 2	LB-125ACG	(3) # 2	T-125ACG	(3) # 2	LL-125ACG
1-1/2	(3) # 1/0	LB-150ACG	(3) # 1	T-150ACG	(3) # 1	LL-150ACG
2	(3) # 4/0	LB-200ACG	(3) # 2/0	T-200ACG	(3) # 2/0	LL-200ACG

Hub Size (Inches)	Max. Wire Fill	LR-ACG	Max. Wire Fill	C-ACG
				
1/2	①	LR-50ACG	①	C-50ACG
3/4	(3) # 6	LR-75ACG	(3) # 6	C-75ACG
1	(3) # 4	LR-100ACG	(3) # 4	C-100ACG
1-1/4	(3) # 2	LR-125ACG	(3) # 2	C-125ACG
1-1/2	(3) # 1	LR-150ACG	(3) # 1/0	C-150ACG
2	(3) # 2/0	LR-200ACG	(3) # 3/0	C-200ACG

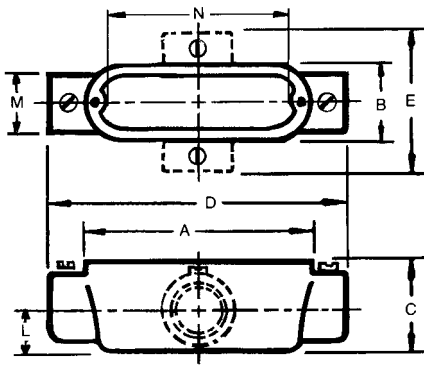
① All 1/2" Max Wire Fill Calculations per the NEC - Annex C - Table C8.

Aluminum Conduit Bodies, Covers and Gaskets

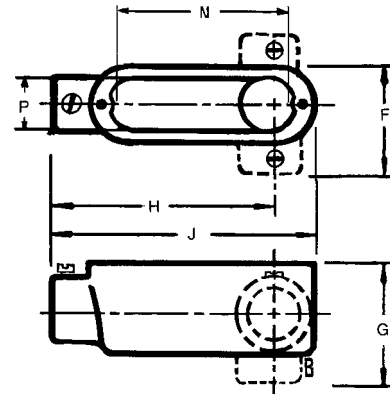
For Rigid Conduit & IMC.

NEC/CEC — Suitable for use in the following
Hazardous Locations:
Class I, Division 2 per NEC 501.10(B)(4)

Dimensions in Millimeters (Inches)



Types C, T, TB, X



Types LB, LL, LR

Hub Size (Inches)	Dimensions In Millimeters (Inches)													
	A	B	C	D	E	F	G	H	J	L	M	N	P	
Pressure Cast														
1/2	100.1 (3.94)	33.3 (1.31)	35.1 (1.38)	120.7 (4.75)	65.0 (2.56)	50.8 (2.00)	52.3 (2.06)	88.9 (3.50)	109.5 (4.31)	16.0 (0.63)	28.7 (1.13)	79.8 (3.14)	26.7 (1.05)	
3/4	117.6 (4.63)	39.6 (1.56)	41.4 (1.63)	143.0 (5.63)	76.2 (3.00)	57.2 (2.25)	62.0 (2.44)	104.9 (4.13)	130.3 (5.13)	19.1 (0.75)	35.1 (1.38)	96.0 (3.78)	32.3 (1.27)	
1	136.7 (5.38)	46.0 (1.81)	47.8 (1.88)	169.9 (6.69)	88.9 (3.50)	66.8 (2.63)	71.4 (2.81)	124.0 (4.88)	152.4 (6.00)	23.9 (0.94)	42.9 (1.69)	114.3 (4.50)	38.6 (1.52)	
1-1/4	182.6 (7.19)	63.5 (2.50)	69.9 (2.75)	217.4 (8.56)	—	88.9 (3.50)	98.6 (3.88)	166.6 (6.56)	200.2 (7.88)	26.9 (1.06)	54.1 (2.13)	152.4 (6.00)	57.2 (2.25)	
1-1/2	182.6 (7.19)	63.5 (2.50)	69.9 (2.75)	217.4 (8.56)	—	88.9 (3.50)	96.8 (3.81)	163.6 (6.44)	200.2 (7.88)	30.2 (1.19)	60.5 (2.38)	152.4 (6.00)	57.2 (2.25)	
2	241.3 (9.50)	79.5 (3.13)	87.4 (3.44)	274.6 (10.81)	—	106.4 (4.19)	115.8 (4.56)	211.1 (8.31)	258.8 (10.19)	38.1 (1.50)	74.7 (2.94)	204.7 (8.06)	69.9 (2.75)	
Sand Cast														
2-1/2	311.2 (12.25)	109.5 (4.31)	98.6 (3.88)	384.3 (15.13)	—	146.1 (5.75)	133.4 (5.25)	301.8 (11.88)	347.7 (13.69)	46.0 (1.81)	85.9 (3.38)	270.0 (10.63)	93.7 (3.69)	
3	311.2 (12.25)	109.5 (4.31)	117.6 (4.63)	384.3 (15.13)	—	146.1 (5.75)	152.4 (6.00)	293.6 (11.56)	347.7 (13.69)	55.6 (2.19)	104.9 (4.13)	270.0 (10.63)	93.7 (3.69)	
3-1/2	378.0 (14.88)	139.7 (5.50)	131.8 (5.19)	460.5 (18.13)	—	181.1 (7.13)	173.0 (6.81)	355.6 (14.00)	419.1 (16.50)	63.5 (2.50)	120.7 (4.75)	333.5 (13.13)	124.0 (4.88)	
4	378.0 (14.88)	139.7 (5.50)	141.2 (5.56)	460.5 (18.13)	—	181.1 (7.13)	182.6 (7.19)	349.3 (13.75)	419.1 (16.50)	69.9 (2.75)	130.3 (5.13)	333.5 (13.13)	124.0 (4.88)	

OZ/GEDNEY™

COMMERCIAL AND INDUSTRIAL FITTINGS: CONDUIT BODIES

Aluminum Conduit Bodies, Covers and Gaskets

Set Screw Type for EMT (Thinwall Conduit).

NEC/CEC — Suitable for use in the following
Hazardous Locations:
Class I, Division 2 per NEC 501.10(B)(4)

Applications

- To provide access to conductors for pulling, splicing, maintenance and future changes/ upgrades.
- Allows connection of straight conduit runs, branch conduit runs and 90° bends.

Features

- Slotted hex head steel hardened cup-point set screw for EMT.
- Internal volume and maximum wire clearly marked on castings.

Standard Materials

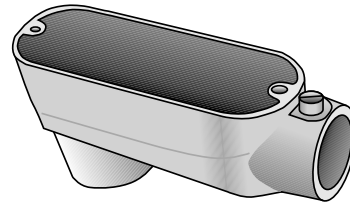
- Diecast copperfree (max. 4/10 of 1%) aluminum

Standard Finishes

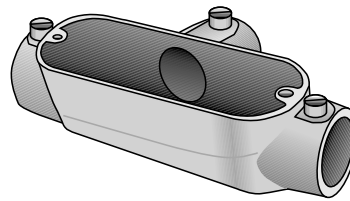
- Aluminum enamel

NEC/CEC Certifications and Compliances

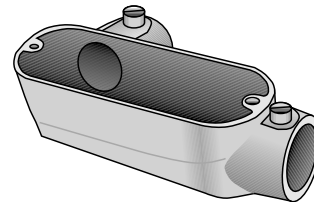
- UL Standards: 514A
- UL Listed: E-18095
- CSA Standard: C22.2 No. 18
- CSA Certified: 009795
- NEMA Standard: FB-1, FB-2.10



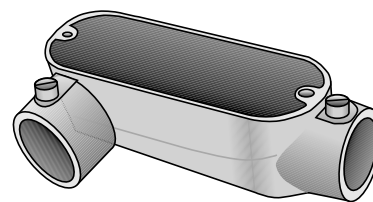
Type LB-TW



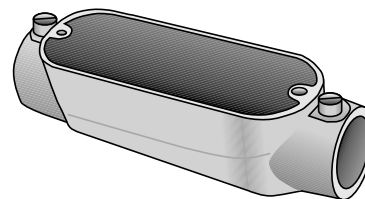
Type T-TW



Type LL-TW



Type LR-TW




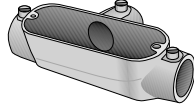
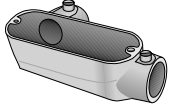
Type C-TW

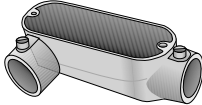
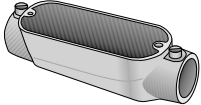
Aluminum Conduit Bodies, Covers and Gaskets

Set Screw Type for EMT (Thinwall Conduit).

NEC/CEC — Suitable for use in the following
Hazardous Locations:
Class I, Division 2 per NEC 501.10(B)(4)

Aluminum Conduit Bodies

Hub Size (Inches)	Max. Wire Fill	LB-TW	Max. Wire Fill	T-TW	Max. Wire Fill	LL-TW
						
1/2	①	LB-50ATW	①	T-50ATW	①	LL-50ATW
3/4	(3) # 6	LB-75ATW	(3) # 6	T-75ATW	(3) # 6	LL-75ATW
1	(3) # 4	LB-100ATW	(3) # 4	T-100ATW	(3) # 4	LL-100ATW
1-1/4	(3) # 2	LB-125ATW	(3) # 2	T-125ATW	(3) # 2	LL-125ATW
1-1/2	(3) # 1/0	LB-150ATW	(3) # 1	T-150ATW	(3) # 1	LL-150ATW
2	(3) # 4/0	LB-200ATW	(3) # 2/0	T-200ATW	(3) # 2/0	LL-200ATW

Hub Size (Inches)	Max. Wire Fill	LR-TW	Max. Wire Fill	C-TW
				
1/2	①	LR-50ATW	①	C-50ATW
3/4	(3) # 6	LR-75ATW	(3) # 6	C-75ATW
1	(3) # 4	LR-100ATW	(3) # 4	C-100ATW
1-1/4	(3) # 2	LR-125ATW	(3) # 2	C-125ATW
1-1/2	(3) # 1	LR-150ATW	(3) # 1/0	C-150ATW
2	(3) # 2/0	LR-200ATW	(3) # 3/0	C-200ATW

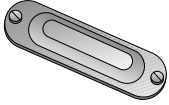
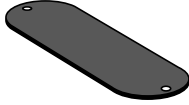
① All 1/2" Max Wire Fill Calculations per the NEC - Annex C - Table C8.

Aluminum Conduit Bodies, Covers and Gaskets

For Rigid Conduit & IMC.

NEC/CEC — Suitable for use in the following
Hazardous Locations:
Class I, Division 2 per NEC 501.10(B)(4)

Blank Covers and Gaskets ①

Body Size (Inches)	Domed Top Design Cover	Solid Cover Sealing Gasket	
		Velbuna	Neoprene
			
1/2	BS-50A	SG-50	SGN-50
3/4	BS-75A	SG-75	SGN-75
1	BS-100A	SG-100	SGN-100
1-1/4 - 1-1/2	BS-125A	SG-125	SGN-125
2	BS-200A	SG-200	SGN-200
2-1/2 - 3	BS-250A	SG-250	SGN-250
3-1/2 - 4	BS-350A ①	SG-350	SGN-350

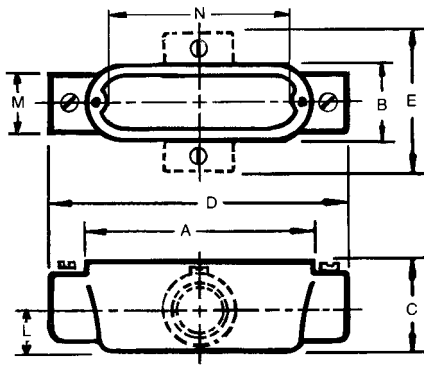
① Flat Top Design Cover

Aluminum Conduit Bodies, Covers and Gaskets

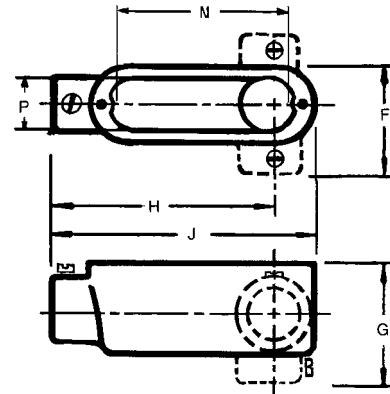
For Rigid Conduit & IMC.

NEC/CEC — Suitable for use in the following
Hazardous Locations:
Class I, Division 2 per NEC 501.10(B)(4)

Dimensions in Millimeters (Inches)



Types C, T, TB, X



Types LB, LL, LR

Hub Size (Inches)	Dimensions In Millimeters (Inches)												
	A	B	C	D	E	F	G	H	J	L	M	N	P
Pressure Cast													
1/2	100.1 (3.94)	33.3 (1.31)	35.1 (1.38)	120.7 (4.75)	65.0 (2.56)	50.8 (2.00)	52.3 (2.06)	88.9 (3.50)	109.5 (4.31)	16.0 (0.63)	28.7 (1.13)	79.8 (3.14)	26.7 (1.05)
3/4	117.6 (4.63)	39.6 (1.56)	41.4 (1.63)	143.0 (5.63)	76.2 (3.00)	57.2 (2.25)	62.0 (2.44)	104.9 (4.13)	130.3 (5.13)	19.1 (0.75)	35.1 (1.38)	96.0 (3.78)	32.3 (1.27)
1	136.7 (5.38)	46.0 (1.81)	47.8 (1.88)	169.9 (6.69)	88.9 (3.50)	66.8 (2.63)	71.4 (2.81)	124.0 (4.88)	152.4 (6.00)	23.9 (0.94)	42.9 (1.69)	114.3 (4.50)	38.6 (1.52)
1-1/4	182.6 (7.19)	63.5 (2.50)	69.9 (2.75)	217.4 (8.56)	—	88.9 (3.50)	98.6 (3.88)	166.6 (6.56)	200.2 (7.88)	26.9 (1.06)	54.1 (2.13)	152.4 (6.00)	57.2 (2.25)
1-1/2	182.6 (7.19)	63.5 (2.50)	69.9 (2.75)	217.4 (8.56)	—	88.9 (3.50)	96.8 (3.81)	163.6 (6.44)	200.2 (7.88)	30.2 (1.19)	60.5 (2.38)	152.4 (6.00)	57.2 (2.25)
2	241.3 (9.50)	79.5 (3.13)	87.4 (3.44)	274.6 (10.81)	—	106.4 (4.19)	115.8 (4.56)	211.1 (8.31)	258.8 (10.19)	38.1 (1.50)	74.7 (2.94)	204.7 (8.06)	69.9 (2.75)
Sand Cast													
2-1/2	311.2 (12.25)	109.5 (4.31)	98.6 (3.88)	384.3 (15.13)	—	146.1 (5.75)	133.4 (5.25)	301.8 (11.88)	347.7 (13.69)	46.0 (1.81)	85.9 (3.38)	270.0 (10.63)	93.7 (3.69)
3	311.2 (12.25)	109.5 (4.31)	117.6 (4.63)	384.3 (15.13)	—	146.1 (5.75)	152.4 (6.00)	293.6 (11.56)	347.7 (13.69)	55.6 (2.19)	104.9 (4.13)	270.0 (10.63)	93.7 (3.69)
3-1/2	378.0 (14.88)	139.7 (5.50)	131.8 (5.19)	460.5 (18.13)	—	181.1 (7.13)	173.0 (6.81)	355.6 (14.00)	419.1 (16.50)	63.5 (2.50)	120.7 (4.75)	333.5 (13.13)	124.0 (4.88)
4	378.0 (14.88)	139.7 (5.50)	141.2 (5.56)	460.5 (18.13)	—	181.1 (7.13)	182.6 (7.19)	349.3 (13.75)	419.1 (16.50)	69.9 (2.75)	130.3 (5.13)	333.5 (13.13)	124.0 (4.88)

OX/GEDNEY™

COMMERCIAL AND INDUSTRIAL FITTINGS: CONDUIT BODIES