

**Robust solutions where you need  
them, when you need them**



**Appleton™ Enclosures & Controls**  
Emerson Quick Release for Appleton™ Products Out of United States





**Our distribution equipment is the solution that keeps your power equipment safe, regardless of environment.**



Fast, reliable production and shipment services to suit your need.

You need speed and reliability from your electrical product manufacturer to ensure your projects and operations run smoothly. Finding a vendor you can count on when timing matters isn't always easy. With Emerson's Quick Release Program, you'll have access to a range of fast, dependable production and shipment options for Appleton electrical products to get them where you need to, when you need to. Our Quick Release Program is a world-class fulfillment program that allows for fast shipment of select Appleton products to maximize speed and responsiveness. It leverages our local infrastructure, local presence and our commitment to service to help you avoid downtime, stay on schedule, respond to the unexpected, and control costs in today's challenging environments.

Put Emerson's wealth of resources and expertise to work for you to resolve all your part and product shipping needs, no matter the circumstances. Expand your options. Meet all your application needs with our line of 21,000 Appleton electrical products. Contact us about your specific requirements at 800-621-1506 or locate a representative in your area at [www.appletonelec.com](http://www.appletonelec.com).



Emerson Quick Release products are designed with power protection in mind, no matter the location.

**PlexPower™ Factory Sealed Power and Lighting Distribution Panelboards ► p4**

**AE Series Disconnect Switches ► p10**

**D2P Factory Sealed Circuit Breaker Panelboards ► p6**

**AE Bolted Circuit Breaker Enclosures ► p11**

**AEB Series Bolted Combination and Non-Combination Full Voltage Motor Starters ► p8**

**AJBEW Junction Boxes/ ACSEW Control Stations ► p12**

**ACSE Series Manual Motor Starter ► p9**

#### Short lead times to serve you better:

*Look for these icons for product specific lead times.*

Made to stock products shipped within the United States  
3 days after receipt of the order and required forms.

**3DAY EXPRESS** ①  
To the continental United States

Made to stock products shipped within the United States  
5 days after receipt of the order and required forms.

**5DAY EXPRESS** ①  
To the continental United States

Made to stock products shipped within the United States  
10 days after receipt of the order and required forms.

**10DAY EXPRESS** ①  
To the continental United States

① Order quantity limited, see specific product for details.

# PlexPower™ Factory Sealed Power and Lighting Distribution Panelboards

## Stainless Steel Enclosures

- Indoor and outdoor protection and control of electrical equipment and circuits that is suitable for use on lighting, heat trace and power circuits. Ideal for placement in wet, corrosive environments or where flammable gases or vapors are likely to be present.
- The PlexPower panelboard features a ground-breaking design that uses individual breaker housings to minimize the downtime and costs associated with servicing circuit breakers in hazardous locations.

## Certifications and Compliances

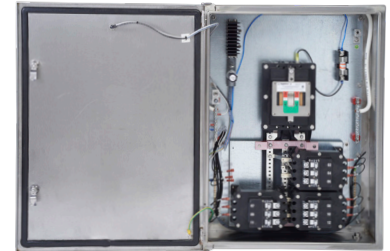
- Class I, Division 2, Group B, C, D
- Class I, Zone 1, AEx de IIB+H<sub>2</sub> T5
- Ex de IIB+H<sub>2</sub> T5
- Type 4X, IP66
- UL Standards: ANSI/UL 67, ANSI/ISA 12.12.01, ANSI/UL 1203, ANSI/UL 60079-0, ANSI/UL60079-1, ANSI/UL60079-7
- CSA Standards: C22.2 No. 29, C22.2 No. 0, C22.2 No. 213, CAN E60079-0, CAN E60079-7, CAN E60079-1
- cCSAus Certified: 039199
- Rated at 10kAIC

*Note: Final product certification is based on the configuration defined.*

## SHIPPED IN 5 BUSINESS DAYS.

*(Maximum 5 panels per order.)*

**Include the completed breaker schedule form with all orders. All breaker positions must be filled.**



Wiring System	Number of Breakers	Catalog Number ①②	
		Main Breaker ③	Main Lugs
Lighting Panelboard Internal Actuation Only			
120/208V, 3Ø AC	12	RQSD312MBQRP	RQSD312MLQRP
	18	RQSJ318MBQRP	RQSD318MLQRP
	24	RQSF324MBQRP	RQSJ324MLQRP
	30	RQSF330MBQRP	RQSF330MLQRP
	36	RQSL336MBQRP	RQSF336MLQRP
120/240, 1Ø AC	12	RQSD112MBQRP	RQSD112MLQRP
	18	RQSJ118MBQRP	RQSD118MLQRP
	24	RQSF124MBQRP	RQSJ124MLQRP
	30	RQSF130MBQRP	RQSF130MLQRP
	36	RQSL136MBQRP	RQSF136MLQRP
Power Panelboard Internal Actuation Only			
277/480V, 3Ø AC	12	RFSI412MBQRP	RFSI412MLQRP
	18	RFSE418MBQRP	RFSI418MLQRP
	24	RFSK424MBQRP	RFSE424MLQRP
	30	RFSG430MBQRP	RFSK430MLQRP
	36	RFSG436MBQRP	RFSG436MLQRP
	42	-	RFSG442MLQRP
480V, 3Ø AC	12	RFSI512MBQRP	RFSI512MLQRP
	18	RFSE518MBQRP	RFSI518MLQRP
	24	RFSK524MBQRP	RFSE524MLQRP
	30	RFSG530MBQRP	RFSK530MLQRP
	36	RFSG536MBQRP	RFSG536MLQRP
	42	-	RFSG542MLORP

① Drain and Breather (-DV), nameplate (-NP) and bottom glandplate provided as standard

② No GFI or EPD breakers

③ 15A, 20A, 30A, 50A, 60A, 100A, 150A Main Breaker amperages available

Note: Inverted Feed (-INV) optional

# Breaker Schedule Form for PlexPower Panelboards

CUSTOMER'S ORIGINAL PURCHASE ORDER MUST ACCOMPANY COMPLETED FORM

Company Name \_\_\_\_\_  
 Shipping Address \_\_\_\_\_  
 \_\_\_\_\_  
 Account Number \_\_\_\_\_ Purchase Order Number \_\_\_\_\_  
 Part Number \_\_\_\_\_ Purchase Order Date \_\_\_\_\_  
 Quantity \_\_\_\_\_ Internal Order Number \_\_\_\_\_

INCLUDE THE COMPLETED BREAKER SCHEDULE FORM BELOW WITH ALL PLEXPOWER PANELBOARD ORDERS.

Note: All modules are 3 poles (shown with \_\_\_ line).

Please fill each 3-pole module with 3 x 1P or 1 x 3P or 1 x 2P+ 1 x 1P or 1 x 1P+ 1 x 2P.

MAIN BREAKER: Yes ☐ No ☐

MB Trip \_\_\_\_\_ Inverted Feed \_\_\_\_\_

NUMBER OF CIRCUITS: \_\_\_\_\_

CATALOG NO.: \_\_\_\_\_

Ckt	Amp/ Pole	Amp/ Pole	Ckt
1			2
3			4
5			6
7			8
9			10
11			12
13			14
15			16
17			18
19			20
21			22
23			24
25			26
27			28
29			30
31			32
33			34
35			36
37			38
39			40
41			42

NAMEPLATE:

Size: 2" x 4" with 1/4" Lettering  
(Need information at the time of order)

Nameplate Details

Notes:

For lighting panelboards:

- 1, 2 and 3 pole options available for 15AT, 20AT, 30AT, 40AT
- 15A, 20A, 30A, 50A, 60A, 100A, 150A Main Breaker amperages available

For power panelboards:

- 1,2,3 pole options available for 15AT, 20AT, 30AT, and 50AT branch breakers
- 3 pole options available for 60AT, 100AT, and 150AT branch breakers
- 15A, 20A, 30A, 50A, 60A, 100A, 150A Main Breaker amperages available



# D2P Factory Sealed Circuit Breaker Panelboards

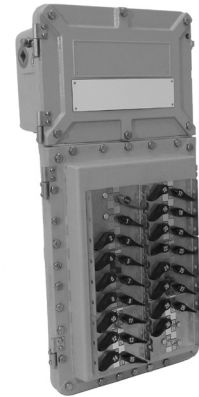
*Explosionproof, Dust-Ignition Proof, Watertight, Corrosion-Resistant*

- Protection and control of electrical equipment and circuits such as lighting and heat tracing in hazardous locations or in damp, wet or corrosive conditions.
- Designed for use in Class I, Division 2 areas where ignitable vapors or gases may be present under unusual conditions, or in Class II, Division 1 areas where combustible dusts are present.

## Certifications and Compliances

- Class I, Division 2, Groups B ♦, C ♦, D
- Class II, Division 1 and 2, Groups E, F, G
- Class III
- NEMA 3, 3R, 4, 4X, 5, 7BCD, 9EFG, 12
- UL Standard: UL 877, UL 1203
- UL Classified: E84577

♦ For Groups B and C, all conduits must be sealed adjacent to enclosure.



## SHIPPED IN 10 BUSINESS DAYS.

*(Maximum 5 panels per order. No GFI, EPD, HID breakers or No Top Entry)*

**Include the Completed Breaker Schedule Form with all orders. All breaker positions must be filled.**

Main Lug Maximum Amps	Incoming Cable Range	Wiring System	Number of Breakers	Panel Size	Circuits	Catalog Number ①
250	250 MCM to 6	Number 4 120/240V AC	12	A	12	D2P4A12QRP
			24	B	24	D2P4B24QRP
			36	C	36	D2P4C36QRP
		Number 5 120/208V AC	12	A	12	D2P5A12QRP
			24	B	24	D2P5B24QRP
			36	C	36	D2P5C36QRP

Note: Standard drilling is provided.

# Breaker Schedule Form for D2P Panelboards

CUSTOMER'S ORIGINAL PURCHASE ORDER MUST ACCOMPANY COMPLETED FORM

Company Name _____	
Shipping Address _____	
_____	
Account Number _____	Purchase Order Number _____
Part Number _____	Purchase Order Date _____
Quantity _____	Internal Order Number _____

INCLUDE THE COMPLETED BREAKER SCHEDULE FORM BELOW WITH ALL CIRCUIT BREAKER PANELBOARD ORDERS.

*Note: For 2 pole breakers do not fill next circuit.  
For 3 pole breakers do not fill next 2 circuits.*

*Main Breaker:  
2 Pole Main Breaker Circuit 1 and 2 will be occupied by Mains  
3 Pole Main Breaker Circuit 1, 2, and 3 will be occupied by Mains*

## 12 CIRCUITS MAXIMUM

MAIN BREAKER: Yes ☐ No ☐  
MB Trip \_\_\_\_\_

NUMBER OF CIRCUITS: \_\_\_\_\_

CATALOG NO.: \_\_\_\_\_

Ckt	Amp/Pole	Amp/Pole	Ckt
1			7
2			8
3			9
4			10
5			11
6			12

## 24 CIRCUITS MAXIMUM

MAIN BREAKER: Yes ☐ No ☐  
MB Trip \_\_\_\_\_

NUMBER OF CIRCUITS: \_\_\_\_\_

CATALOG NO.: \_\_\_\_\_

Ckt	Amp/Pole	Amp/Pole	Ckt
1			13
2			14
3			15
4			16
5			17
6			18
7			19
8			20
9			21
10			22
11			23
12			24

## 36 CIRCUITS MAXIMUM

MAIN BREAKER: Yes ☐ No ☐  
MB Trip \_\_\_\_\_

NUMBER OF CIRCUITS: \_\_\_\_\_

CATALOG NO.: \_\_\_\_\_

Ckt	Amp/Pole	Amp/Pole	Ckt
1			19
2			20
3			21
4			22
5			23
6			24
7			25
8			26
9			27
10			28
11			29
12			30
13			31
14			32
15			33
16			34
17			35
18			36

Notes:

- 1, 2, and 3 pole option available for 10AT, 15AT, 20AT, 30AT, 40AT, 50AT, 60AT, 70AT
- 2 and 3 pole option available for 80AT, 90AT, 100AT
- Shading indicates position of main breaker

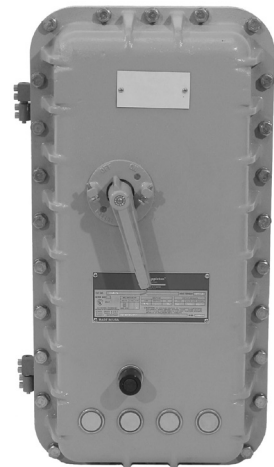
# AEB Series Bolted Combination and Non-Combination Full Voltage Motor Starters

*Explosionproof, Dust-Ignition Proof, Watertight*

- Combination and non-combination motor starters are used in areas where hazardous materials are handled or stored.
- These units provide disconnecting means, under voltage protection, circuit protection, and motor running protection.

## Certifications and Compliances

- Class I, Division 1 and 2, Groups B, C, D
- Class II, Division 1 and 2, Groups E, F, G
- Class III
- NEMA 4, 4X, 7BCD, 9EFG
- ANSI/UL 508-17th Edition
- ANSI/UL 50-11th Edition
- ANSI/UL 1203-4th Edition
- CAN/CSA C22.2 No. 0 -10
- CAN/CSA C22.2 No. 14 -10
- CAN/CSA C22.2 No. 25 -1966
- CAN/CSA C22.2 No. 30 -M1986
- CAN/CSA-C22.2 No. 94 -M91



**SHIPPED IN 5 BUSINESS DAYS.**

*(Maximum 3 starters per order.)*

## AEB Series Full Voltage Non-Reversing Motor Starters and Thermal Overload Relay ③: 3 Phase, 60 Hz (A200 Series)

Line Voltage	NEMA Size	Maximum Horsepower	Standard Conduit (inches)	Catalog Number ①②
480	0	5	1-1/2	AE0BA4W1QRP
	1	10	1-1/2	AE1BA4W1QRP
	2	25	1-1/2	AE2BA4W1QRP

## AEB Series Combination Full Voltage Non-Reversing Motor Starters with MCP Breaker and Thermal Overload Relay ③:

3 Phase, 60 Hz (A200 Series)

Line Voltage	NEMA Size	Maximum Horsepower	Amp Trip	Standard Conduit (inches)	Control Power Options	Catalog Number ①②
480	1	7	15	1-1/2	Fused CPT, 50 VA	AE1BB4W1C3T1QRP
	1	10	30	1-1/2		AE1BB4W1C4T1QRP
	2	12	30	1-1/2	Fused CPT, 100 VA	AE2BB4W1C4T2QRP
	2	25	50	1-1/2		AE2BB4W1C5T2QRP
	3	30	50	2-1/2	Fused CPT, 200 VA	AE3BB4W1C5T3QRP
	3	50	100	2-1/2		AE3BB4W1C7T3QRP
	4	100	150	2-1/2	Fused CPT, 250 VA	AE4BB4W1C8T4QRP

Note: 120V coil standard.

① Drain (-DN), Breather (-BR) and Nameplate (-NP) provided as standard

② Start/Stop Push Button and Red 120V Pilot Light provided as standard

③ Thermal overload heaters not provided



# ACSE Series Manual Motor Starter

*Explosionproof, Dust-Ignition Proof, Waterproof*

- ACSE Series pushbutton manual motor starters are mounted in rugged, compact enclosures.
- These units are designed for starting single and polyphase Vac or Vdc motors.

## Certifications and Compliances

- Class I, Division 1 and 2, Groups C and D
- Class II, Division 1 and 2, Groups E, F and G
- Class III
- NEMA 3, 3R, 7CD
- UL Standard: UL 1203
- UL Classified: E84577
- CSA Standards: C22.2 No. 14, C22.2 No. 25, C22.2 No. 30
- CSA Certified: 1395785



**SHIPPED IN 5 BUSINESS DAYS.**

*(Maximum 5 starters per order.)*

## ACSE Series Manual Motor Starters:

Number of Poles	NEMA Size	Motor Voltage	Maximum HP Poly Phase	Catalog Number ① ②
3	0	115	—	ACSE04080503QRP
		200 - 230	3	
		380 - 575	5	
	1	115	—	ACSE04080513QRP
		200 - 230	7-1/2	
		380 - 575	10	

*Note: Thermal overload heaters not provided.*

*Starters are Square D. Square D is a registered trademark of Schneider Electric.*

① To order a breather (-BR) for field installation, please order: BRTB4X separately

② To order a drain (-DN) for field installation, please order: ECD50B4X separately

# AE Series Disconnect Switches

## Explosionproof, Dust-Ignition Proof

- Explosionproof disconnect enclosures are used where hazardous materials are handled or stored.
- These units are used for overload and short circuit protection, control of lighting and power circuits.

## Certifications and Compliances

- Class I, Division 1 and 2, Groups B, C, D
- Class II, Division 1 and 2, Groups E, F, G
- Class III
- NEMA 4, 4X, 7BCD, 9EFG
- UL Standard: UL 1203
- UL Classified: E84577



## SHIPPED IN 5 BUSINESS DAYS.

(Maximum 5 disconnect switches per order.)

Number of Poles	Volts	Amp Rating	Standard Conduit (inches)	Fused (fuses not included) Catalog Number ①	Non-Fused Catalog Number ①
3	600 Vac, 125/250 Vdc	30	1-1/2	AEAB3036FDSQRP	AEAB3036DSQRP
		60	2	AEBB6036FDSQRP	AEAB6036DSQRP
		100	2-1/2	AECB10036FDSQRP	AEBB10036DSQRP

Note: Fuses not included. We recommend J Type Fuses

① Drain (-DN), Breather (-BR) and Nameplate (-NP) provided as standard

# AE Bolted Circuit Breaker Enclosures

*Explosionproof, Dust-Ignition Proof, Watertight, 3 Pole, Non-Interchangeable Trip*

- Explosionproof circuit breaker enclosures are used where hazardous materials are handled or stored.
- These units are used for overload and short circuit protection, control of lighting and power circuits.

## Certifications and Compliances

- Class I, Division 1 and 2, Groups B, C, D
- Class II, Division 1 and 2, Groups E, F, G
- Class III
- NEMA 4, 4X, 7BCD, 9EFG
- UL Standard: UL 1203
- UL Classified: E84577
- CSA Standards: C22.2 No. 5-M, C22.2 No. 25, C22.2 No. 30-M
- CSA Certified: 1324917



**SHIPPED IN 5 BUSINESS DAYS.**

*(Maximum 5 circuit breakers per order.)*

Number of Poles	Volts	Breaker Frame Size	Amp Rating	Standard Conduit (inches)	Catalog Number ①
3	600 Vac, 125/250 Vdc	100	20	1-1/2	AEAB13620CQRP
			30	1-1/2	AEAB13630CQRP
			60	2	AEBB13660CQRP
			100	2	AEBB13610CQRP
		150	150	2-1/2	AECB13615CQRP
		250	175	3	AEEB23617CQRP
			200	3	AEEB23620CQRP

① Drain (-DN), Breather (-BR) and Nameplate (-NP) provided as standard

# AJBEW Junction Boxes/ ACSEW Control Stations

Lead Time:  
**3DAY EXPRESS**  
To the continental United States  
**5DAY EXPRESS**  
To the continental United States

## Explosionproof, Dust-Ignition Proof

- AJBEW Explosionproof junction boxes are used where hazardous materials are handled or stored. Enclosures may be used to house terminals for splicing wires, pull box, bus box.
- To order the enclosure for use as a control panel substitute AJBEW with ACSEW. The enclosure options remain the same as with the AJBEW.**

## Certifications and Compliances

- Class I, Division 1 and 2, Groups B $\diamond$ , C $\diamond$ , D
- Class I, Zone 1 and 2, Groups IIA, IIB $\diamond$ +H2 $\diamond$
- Class II, Division 1 and 2, Groups E, F, G
- Class III
- NEMA 4, 7B $\diamond$ C $\diamond$ D, 9EFG

$\diamond$  For Groups B and C, all conduits must be sealed within 50.8 mm (2") of the enclosure.



**SHIPPED IN 3 BUSINESS DAYS: WITH UP TO 10 STANDARD DRILLED AND TAPPED CONDUIT OPENINGS AND/OR NPSMS (COVER ONLY), AND/OR HINGES.**

**Include the Completed Junction Box Drill and Tap Schedule and Entries, Hinges and Back Pan requirement Form with all orders.**  
*(Maximum 5 junction boxes total order quantity. For larger quantities please consult factory.)*

Overall Dimensions			Mounting Dimensions Width Between Bracket Holes				Inside Dimensions				Conduit Entry C/L to Box Bottom	Maximum Conduit Size (inches)	Ship Weight (lbs.)	Catalog Number ①②③
Height	Width	Depth	Top/ Top	Top/ Side	Side/ Top	Side/ Side	Width	Height	Box Only	Cover Only				
10.40	12.40	6.50	4.50	9.13	10.56	4.50	6.00	8.00	3.75	0.75	2.50	2.0	20	AJBEW060804QRP
12.25	12.25	8.25	4.50	10.75	10.75	4.50	8.00	8.00	5.75	0.75	3.25	2.0	30	AJBEW080806QRP
12.50	14.50	8.50	7.00	10.75	12.50	6.50	8.00	10.00	5.75	0.75	3.50	2.0	36	AJBEW081006QRP
14.81	14.81	9.13	6.50	10.78	13.00	4.50	10.25	10.25	5.75	1.50	3.38	2.0	44	AJBEW101006QRP
17.38	17.38	9.25	8.63	15.63	15.63	8.63	12.25	12.25	5.75	1.50	3.75	3.0	65	AJBEW121206QRP
17.00	23.00	11.13	7.00	15.75	21.00	14.13	12.25	18.25	8.75	1.50	4.25	4.0	101	AJBEW121808QRP
21.00	21.00	12.39	11.00	19.75	19.75	11.00	16.50	16.50	8.38	1.50	4.88	4.0	140	AJBEW161608QRP
23.38	23.38	11.94	13.00	21.75	21.75	13.00	18.25	18.25	7.75	1.50	4.50	4.0	198	AJBEW181808QRP
23.94	30.00	12.18	16.13	21.75	27.75	18.38	18.25	24.19	7.75	1.50	5.06	4.0	224	AJBEW182408QRP
29.38	29.38	12.31	18.38	28.00	28.00	18.38	24.50	24.50	7.75	1.50	5.00	4.0	225	AJBEW242408QRP

**SHIPPED IN 5 BUSINESS DAYS: WITH OR WITHOUT HOLES.**

**Include the Completed Junction Box Drill and Tap Schedule and Entries, Hinges and Back Pan requirement Form with all orders.**  
*(Maximum 5 junction boxes total order quantity.)*

Overall Dimensions			Mounting Dimensions Width Between Bracket Holes				Inside Dimensions				Conduit Entry C/L to Box Bottom	Maximum Conduit Size (inches)	Ship Weight (lbs.)	Catalog Number ①②③
Height	Width	Depth	Top/ Top	Top/ Side	Side/ Top	Side/ Side	Width	Height	Box Only	Cover Only				
14.50	18.50	8.44	7.00	13.00	16.63	10.63	10.00	14.00	5.88	0.75	3.13	2.0	55	AJBEW101406QRP
17.38	17.38	11.50	8.63	15.63	15.63	8.63	12.25	12.25	7.75	1.50	4.75	3.5	70	AJBEW121208QRP
19.38	19.38	11.56	9.75	17.75	17.75	9.75	14.75	14.75	7.75	1.38	4.00	3.0	105	AJBEW141408QRP
21.00	21.00	9.81	11.00	19.75	19.75	11.00	16.50	16.50	5.75	1.50	3.88	3.5	132	AJBEW161606QRP
23.38	23.38	9.94	13.00	21.75	21.75	13.00	18.25	18.25	5.75	1.50	4.13	3.5	188	AJBEW181806QRP
23.94	30.00	14.18	16.13	21.75	27.75	18.38	18.25	24.19	9.75	1.50	5.75	4.0	235	AJBEW182410QRP
29.38	29.38	14.31	18.38	28.00	28.00	18.38	24.50	24.50	9.75	1.50	6.13	4.0	240	AJBEW242410QRP
29.00	35.00	13.00	18.00	28.00	34.00	23.00	24.00	30.00	8.00	1.94	5.25	4.0	420	AJBEW243008QRP
30.75	43.00	13.06	18.25	28.00	40.00	29.00	24.25	36.25	7.75	1.63	5.13	4.0	420	AJBEW243608QRP
30.75	43.00	15.06	18.25	28.00	40.00	29.00	24.25	36.25	9.75	1.63	6.00	4.0	450	AJBEW243610QRP

◆ Dimensions (in inches) are nominal. For Class I, Divisions 1 and 2, Groups B and C Locations, all conduits must be sealed within 2" of the enclosure.

① To order an optional breather (-BR), please order: BRTB4X

② To order an optional drain (-DN), please order: ECD50B4X

③ To order options external grounding stud, please order: EGSKIT



# AJBEW/ACSEW Drill and Tap Schedule Form

**CUSTOMER'S ORIGINAL PURCHASE ORDER MUST ACCOMPANY COMPLETED FORM**

Company Name			
Shipping Address			
Account Number			
Part Number		Purchase Order Number	
Quantity		Purchase Order Date	
		Internal Order Number	

## DRILL AND TAP SCHEDULE

Maximum 10 standard entries for QRP Program.

Position	Conduit Size	Dimension "X"	Dimension "K"
1			
2			
3			
4			
5			
6			
7			
8			
9			
10			
11			
12			
13			
14			
15			
16			
17			
18			
19			
20			

### ALL BOXES MUST BE CHECKED

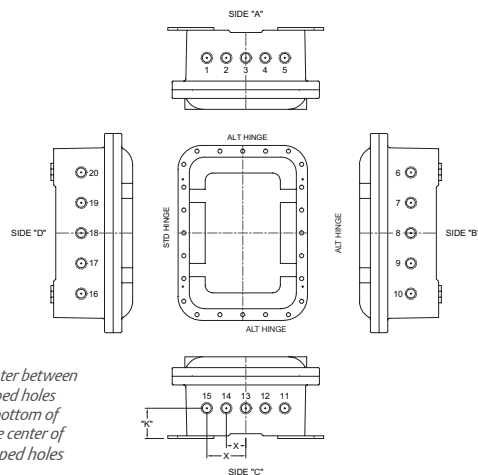
	Yes	No
Entries Required:	<input type="checkbox"/>	<input type="checkbox"/>
Hinges Required:	<input type="checkbox"/>	<input type="checkbox"/>
Back Pan Required:	<input type="checkbox"/>	<input type="checkbox"/>
Drain Entry Required ①:	<input type="checkbox"/>	<input type="checkbox"/>
Breather Entry Required ②:	<input type="checkbox"/>	<input type="checkbox"/>
Cover Operator Drilling Required ②:	<input type="checkbox"/>	<input type="checkbox"/>
External Ground Stud Drilling Required ③:	<input type="checkbox"/>	<input type="checkbox"/>
Factory to locate the best position for X and K dimensions: *	<input type="checkbox"/>	<input type="checkbox"/>
Customer supplied drawing included:	<input type="checkbox"/>	<input type="checkbox"/>

\*If No is checked, the Y and K dimensions must be supplied in Schedule at left or Customer supplied drawing must be submitted.

① Always factory located, only NPT opening provided, drain and breather to be ordered separately.

② For ACSEW, mark devices on cover. Operators on cover require 2-1/2" center to center spacing.

③ External Ground Stud not factory installed, must be ordered separately.



X = distance on center between drilled and tapped holes

K = distance from bottom of enclosure to the center of drilled and tapped holes

Note: Circle the side to indicate alternate hinge location.

## DRILLING AND TAPPING GUIDELINES

Conduit Size (NPT)	Minimum Spacing For Conduit Centers (inches)									
	1/2	3/4	1	1-1/4	1-1/2	2	2-1/2	3	3-1/2	4
1/2	2.13	2.13	2.25	2.63	2.81	3.13	3.63	4.00	4.50	4.50
3/4	2.13	2.13	2.25	2.63	2.81	3.13	3.63	4.00	4.50	4.50
1	2.25	2.25	2.38	2.81	3.00	3.25	3.75	4.13	4.50	4.63
1-1/4	2.63	2.63	2.81	3.13	3.31	3.63	4.13	4.50	4.75	5.00
1-1/2	2.81	2.81	3.00	3.31	3.50	3.81	4.31	4.63	4.94	5.25
2	3.13	3.13	3.25	3.63	3.81	4.13	4.63	5.00	5.83	5.75
2-1/2	3.63	3.63	3.75	4.13	4.31	4.63	5.13	5.31	5.75	6.13
3	4.00	4.00	4.13	4.50	4.63	5.00	5.31	5.75	6.00	6.25
3-1/2	4.50	4.50	4.50	4.75	4.94	5.38	5.75	6.00	6.25	6.50
4	4.50	4.50	4.63	5.00	5.25	5.75	6.13	6.25	6.50	6.75

Dimensions (in inches) are nominal.

# Control and protection of electrical equipment to maintain production, regardless of disturbance.



Appleton is the cornerstone brand of Emerson's Electrical and Lighting business; trusted worldwide to make electrical installations safer, more productive and more reliable.

**United States (Headquarters)**  
**Appleton Grp LLC**  
9377 W. Higgins Road  
Rosemont, IL 60018  
United States  
T +1 800 621 1506

**Europe**  
**ATX SAS**  
Espace industriel nord  
35 rue André Durouchez  
CS 98017  
80084 Amiens Cedex 2, France  
T +33 3 2254 1390

**Canada**  
**EGS Electrical Group Canada Ltd.**  
99 Union Street  
Elmira ON, N3B 3L7  
Canada  
T +1 888 765 2226

**Latin America**  
**EGS Comercializadora Mexico**  
S de RL de CV  
Calle 10 N°145 Piso 3  
Col. San Pedro de los Pinos  
Del. Álvaro Obregon  
Ciudad de México, 01180  
T +52 55 5809 5049

**Asia Pacific**  
**EGS Private Ltd.**  
Block 4008, Ang Mo Kio Ave 10,  
#04-16 TechPlace 1,  
Singapore 569625  
T +65 6556 1100

**Australia Sales Office**  
Bayswater, Victoria  
T +61 3 9721 0387

**Korea Sales Office**  
Seoul  
T +82 2 3483 1555

**China Sales Office**  
Shanghai  
T +86 21 3338 7000

**Jebel Ali- Dubai Office**  
Emerson, Building A  
Appleton Group  
Jebel Ali Free Zone- South  
T +971 4 811 81 00

**Middle East Sales Office**  
Dammam, Saudi Arabia  
T +966 13 510 3702

**India Sales Office**  
Chennai  
T +91 44 3919 7300

**Chile Sales Office**  
Las Condes  
T +56 2928 4819



[emerson.com/fr-fr/automation/appleton](https://emerson.com/fr-fr/automation/appleton)



[LinkedIn.com/company/emerson](https://LinkedIn.com/company/emerson)

The Emerson logo is a trademark and service mark of Emerson Electric Co. Appleton is a registered trademark of Appleton Grp LLC. All other marks are the property of their respective owners. © 2023 Emerson Electric Co. All rights reserved.

